

How to setup access to the  
Hyperflex NVR to view the  
system from a mobile phone



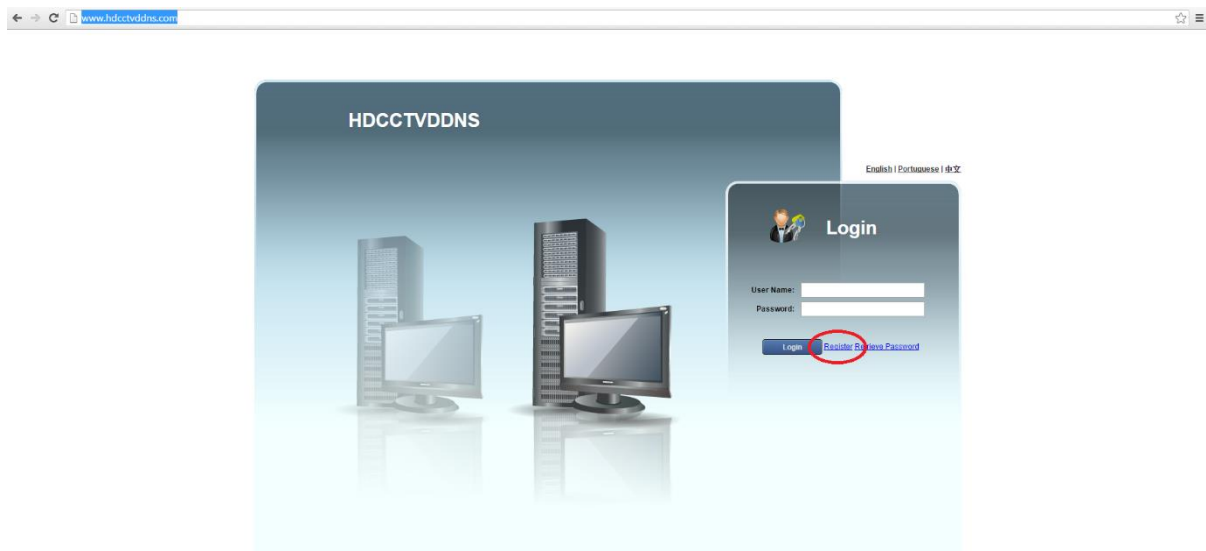
## Stage 1 - Open ports on the Router

Step 1 Open the ports on the router. You can do this by manually opening ports 6060 7070 and 80 or make sure uPnP is enabled

## Stage 2 - Register for the Dynamic DNS service

Step 1 Go to the website <http://www.hdcctvddns.com/>

Step 2 Click on the register button on the left hand side of the page



Step 3 Enter the Details requested

Register Step1

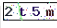
\* User Name:  (User Name should be email address, less than 30 characters)

\* Password:  (Can only contains digits/English, 6-30 characters)

\* Confirm Password:  (Confirm Password and password should be same)

Real Name:  (Can only contains Chinese/English/digits/underline/spaces, less than 30 characters)

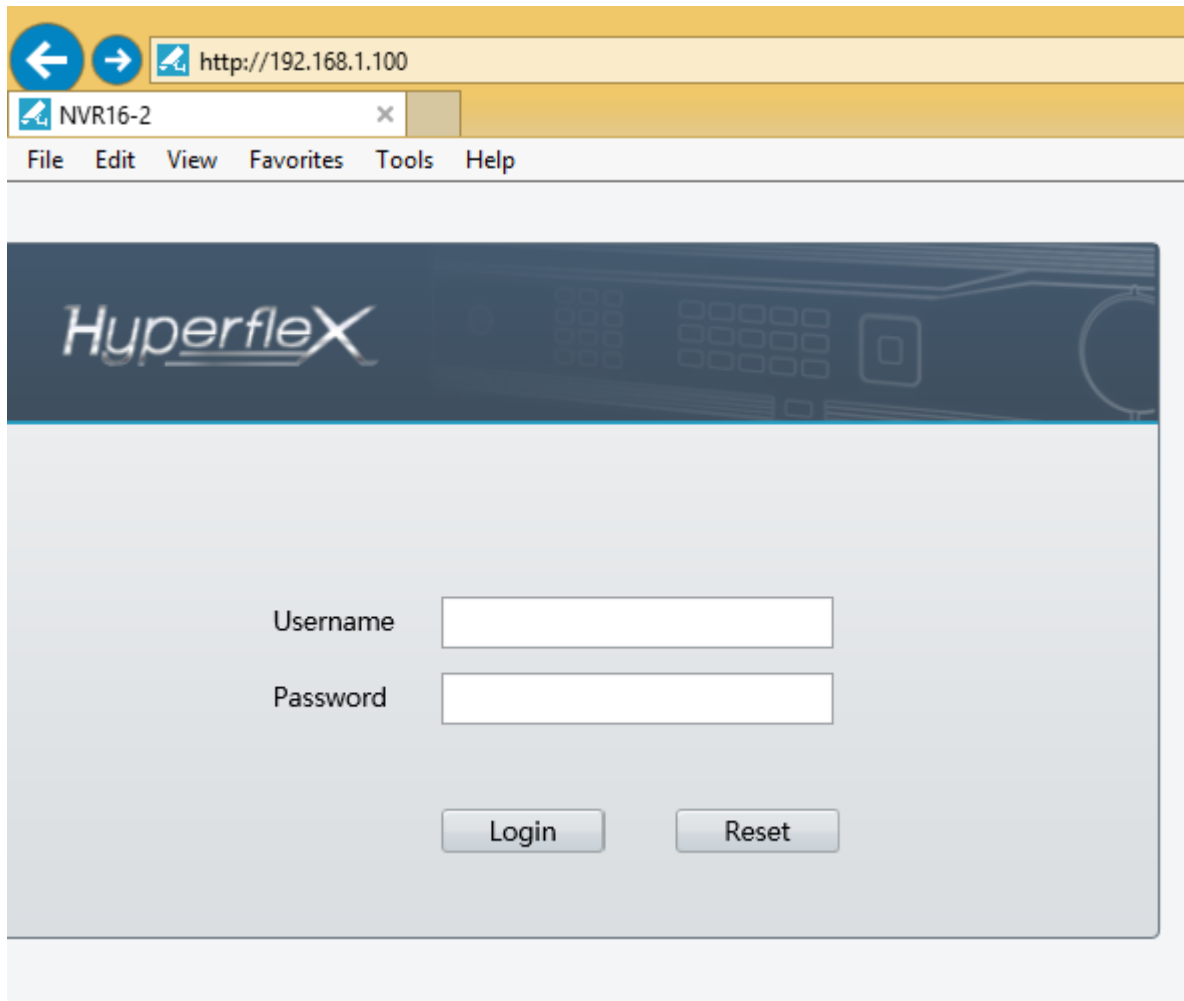
Mobile Phone:  (Can only contains digits, less than 30 characters)

\* Verify Code:  

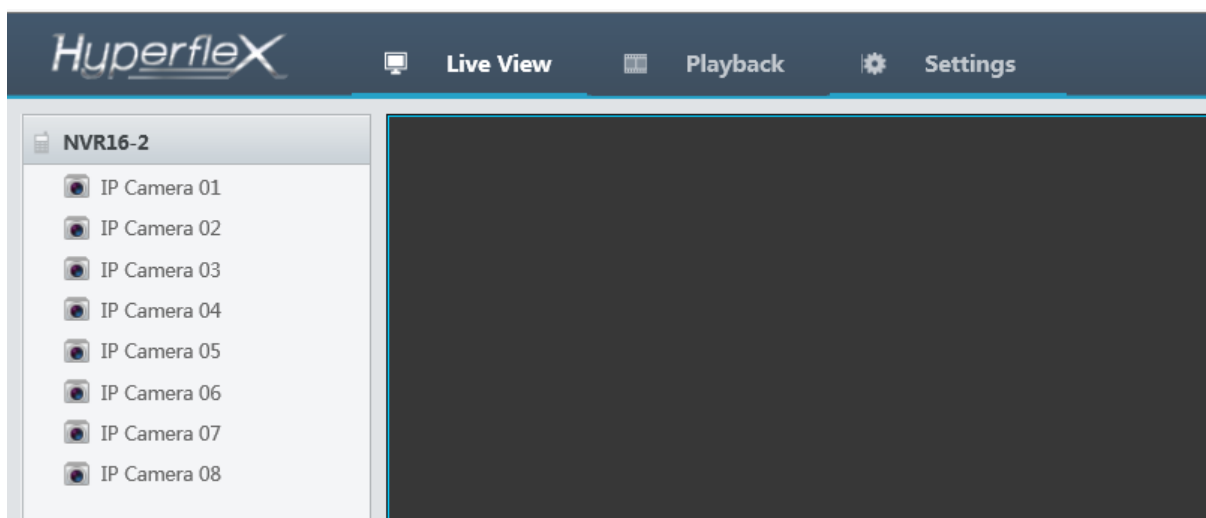
Once finished keep a note of the settings and click register

## Stage 3 - Access the NVR

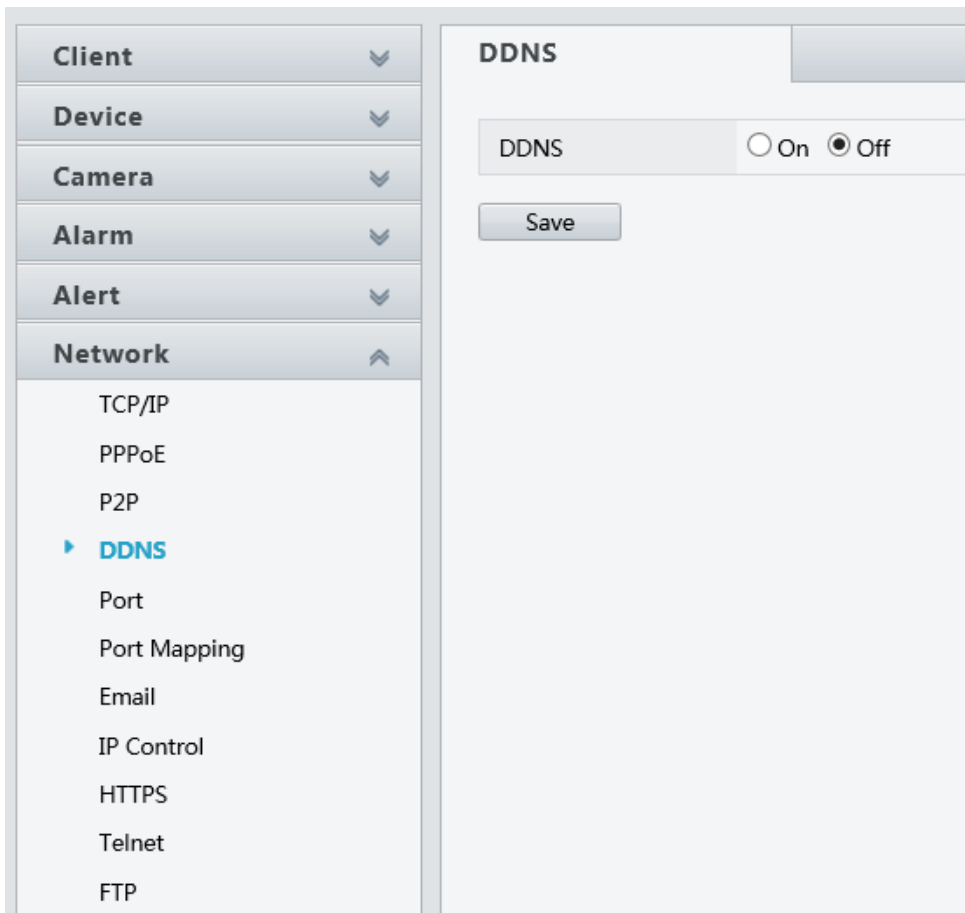
Step 1 Open a browser and enter the IP address of the NVR. Enter the DVR username and password



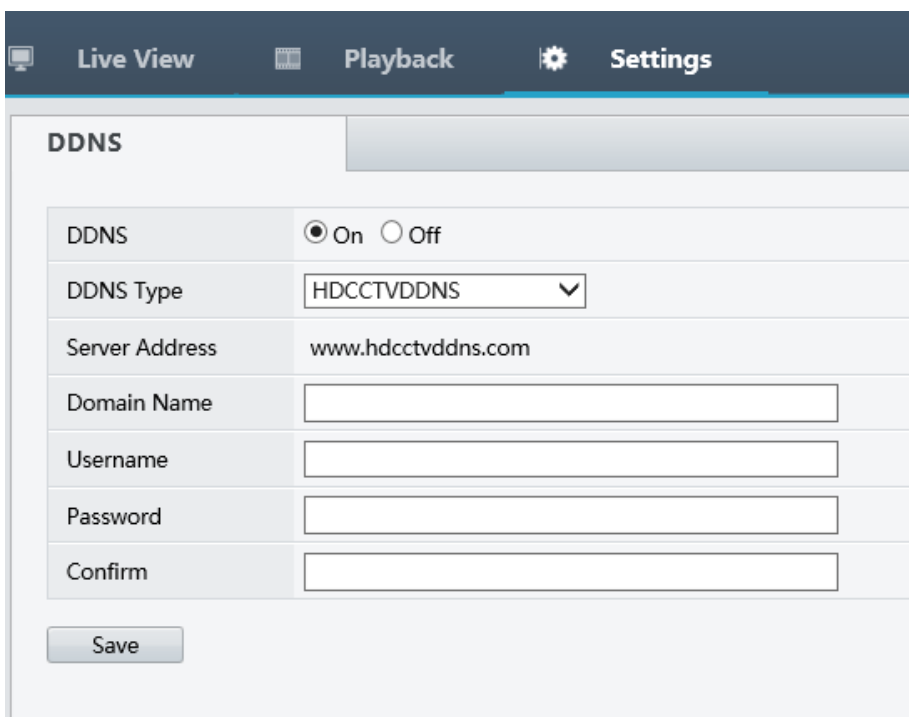
Step 2 Access the NVR and go the settings section.



Step 3 Click on the network tab and click on DDNS tab



Step 4 Make sure DDNS is set to on. Enter the details you put in on Stage 2 step 3. Once finished click save



## Stage 4 - Download the App and setup the device

Step 1 Scan these QR Codes with a QR scanner

iPhone

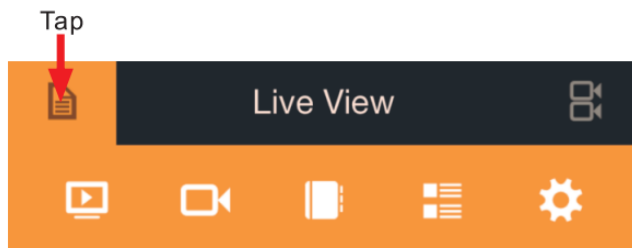


Android



Or download the app from iTunes or Google Play marketplace (depending on mobile)

Step 2 Once the icon has loaded. Tap the "ISS Mobile Icon" This will then load the program



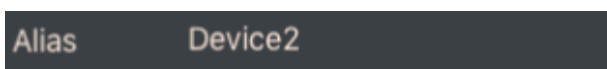
You will then need to add a device click the below button



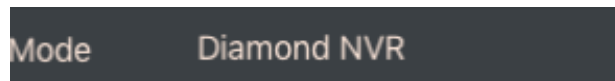
Tap the round plus symbol on the far right hand side.



In the Alias section, enter the name you would like to call the DVR



In the mode selection select Diamond NVR cloud



In the address Selection enter the DDNS name you created in step



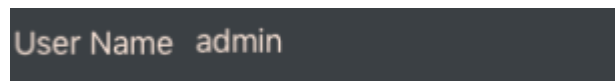
In the SDK port enter "6060"



In the Media port enter "7070"



In the username put the user name admin



In the password put the NVR (admin password)



Tap the save icon in the right hand corner



Step 3 View the system

Press the live view button



Then you should be able to view the cameras

