

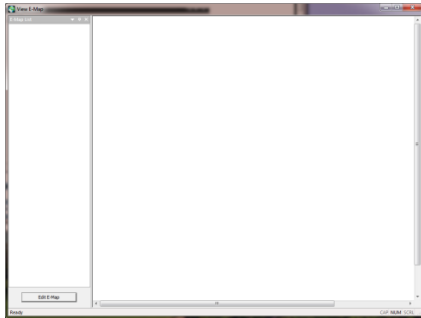
# XD/XDH Unimap – CCTV Electronic mapping application

## Introduction

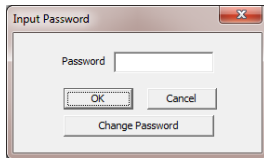
Unimap allows for the creation of electronic maps (E-Map) of site layouts and camera positions. This is useful for real-time monitoring. It also allows for the creation of maps for monitoring multiple sites or floors within a building.

## Getting Started

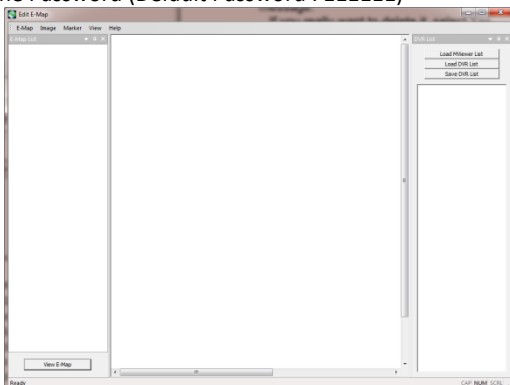
When you first start Unimap, you are presented with an empty setup.



To get started setting up your E-Map, click the button in the bottom left hand corner of the screen 'Edit E-Map'



Enter the Password (Default Password : 111111)



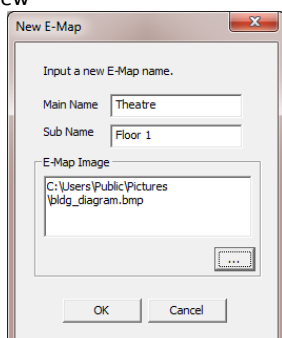
## Configuration of E-Map list

To create E-Map's, you will need floor plan diagrams of the site, building and/or floor. The diagrams need to be in either bitmap (\*.bmp) or Jpeg format (\*.jpg)

## Create an e-Map

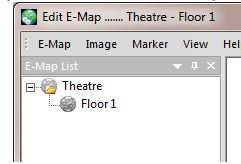
From the Main Menu in the Unimap program:-

- Click 'E-Map'
- Select 'New'



- Type your e-Map name into 'Main Name'
- Type the 'Sub Name' (if required)

- Press to browse and select the image (JPG, BMP) that you want to use on e-Map.
- Click 'OK' to accept
- Click 'E-Map' and 'Save' to save your configuration



After saving, your display will be updated to show your new E-Map list

## Addition of Camera/s

To add camera's to the image map:-

- Click and hold down the (default left) mouse button over the camera you wish to place
- Drag and drop the camera from the DVR list to the required location on the map

## Removal of Camera/s

To Remove camera's from the image map:-

- Select the camera on the map as done with additions
- Drag the camera to the side of the image map
- You will receive a "deletion confirmation" message
- If you really want to delete it, select 'Yes'

## Change Camera position/s

As with addition and deletion, please use the mouse to drag the camera and drop it at the new location on the image map

## Saving the E-Map

Select from the menu:-

- E-Map
- Save

The updated e-Map will be displayed on the left side under E-Map List.

## Deleting the e-Map

Select form the menu:-

- E-Map
- Delete

## Changing the current e-Map image

If you wish to change the image at a later stage, this can be done selecting from the menu:-

- 'Image' then 'Change'

This will open the browse window where you can browse to, and select your new image.

## Deleting all cameras on e-Map

From the menu select:-

- Marker
- Delete All

You will be prompted to confirm the deletion. Click 'Yes' confirm

## Configuration of DVR List

If you're using Multiviewer, you can retrieve the MultiViewer list by clicking:-

- Load MViewer List

This will load all your DVR's configured in MultiView and all the cameras on these DVR's.

## Add DVR Group

If you are not using MultiView, or wish to create a custom list, first create a DVR group. Follow the steps listed to accomplish this

- Right click in the DVR list

- Select 'Add Group' from the popup menu.

- Enter your desired 'Group Name'
- Type in the 'Password' you wish to use
- Re-type the password in 'Confirm Password'
- Click 'OK' to accept

You now have a new Group.

### Add DVR to Group

To add a DVR to this group,

- Right click on your 'Group Name'
- Select 'Add DVR' from the popup menu

- Enter your desired 'DVR Name'
- Enter the 'DVR Address' as configured
- Enter the 'Port' set on the DVR
- Select the Appropriate 'DVR Model'
  - MPEG4\_RT is for the Killer XD
  - H.264 is for the Killer XDH
  - CH{x} refers to the channels

- Mark the channels you wish to use in E-Map
- Select the User, 'ADMIN' is default
- Complete the User 'Password' as set on theDVR

- Click 'OK' to accept

This DVR will now be listed in your DVR List

Follow this same process to add any additional DVR's as required.

Once your DVR list is complete, click 'Save DVR List'

### View Mode

Once your E-Maps are configured, they will be displayed when you start Unimap under E-Map list.

If you are still in Edit mode, click the View E-Map to go into View mode.

In the view mode, the status of each camera on the image map is shown by an icon.

- Grey – No recording/activity
- Red – Recording
- Flashing Red – Recording/Event Occurrence e.g. motion

The camera names are displayed under the icon

Once you double-click the camera, the live video feed will be displayed.

The size of the video feed can be adjusted by selecting a corner and stretching the window.