

3G Mobile Viewing Instruction Manual

For Windows Mobile System

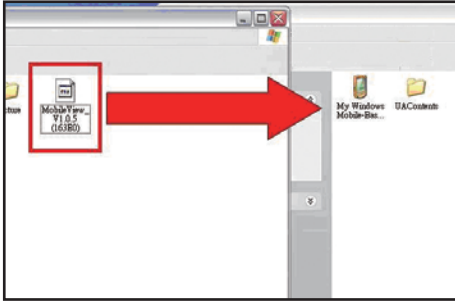


You have to use **Windows Mobile 6.0 and above** for Mobile Operating System.

Chapter 1 Mobile Phone Setup

Step 1

Please download [MobileView_Vx.x.x\(XXXXX\).cab](#) file in your computer, and then attach it to your mobile device.



Step 2

Click [OK] to start transferring the file to your mobile.



Step 3

Turn on your mobile and enter to [Programs]→[File Explorer]



Step 4

Click [MobileView] file to start installing.



Step 5

You will see the icon of "MobileView" after the successful installation.



2.1 Connect to DVR

Step 1



Click **MobileView** to enter mobile viewing mode.

Step 2

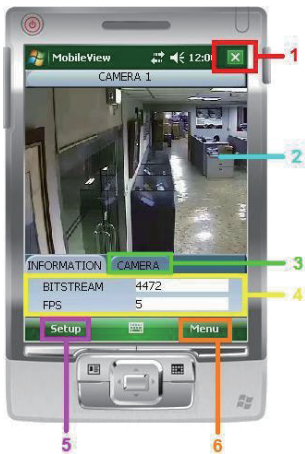
Enter the DVR information and click [Connect] to start connecting DVR.
For Example:



1. IP: Set IP address of the DVR you want to monitor.
2. Port: Set the Network port of the DVR you want to monitor.
3. ID & Password: Input LAN ID and password of the DVR you use.
4. Keep me signed in: You can enable this function to save the ID and password setting in your mobile.

NOTE: The ID & password are the LAN ID and password you selected; please refer to the instruction manual of your DVR.

2.2 3G Mobile Viewing Overview



1. Exit Button

Click to exit mobile viewing mode.

2. Display Screen

MobileView program only provides single channel live viewing. Click the display screen to switch to full screen, and click the screen again to go back.



3. Camera Select

Select the camera you want to monitor.



4. Bitstream/ FPS

You can see the speed of network and frame per second.

5. Setup

You can reset IP, port, ID and password for your DVR. (Please refer to the section 2.1 Step 2)

6. Menu

You can see the version of MobileView program. Click [OK] to exit.

