

3G Mobile Viewing Instruction Manual (For Symbian System)

NOTE: You have to use the mobile devices on the [S60 5th Edition](#) platform.

Chapter 1 MobileView Setup

Step 1

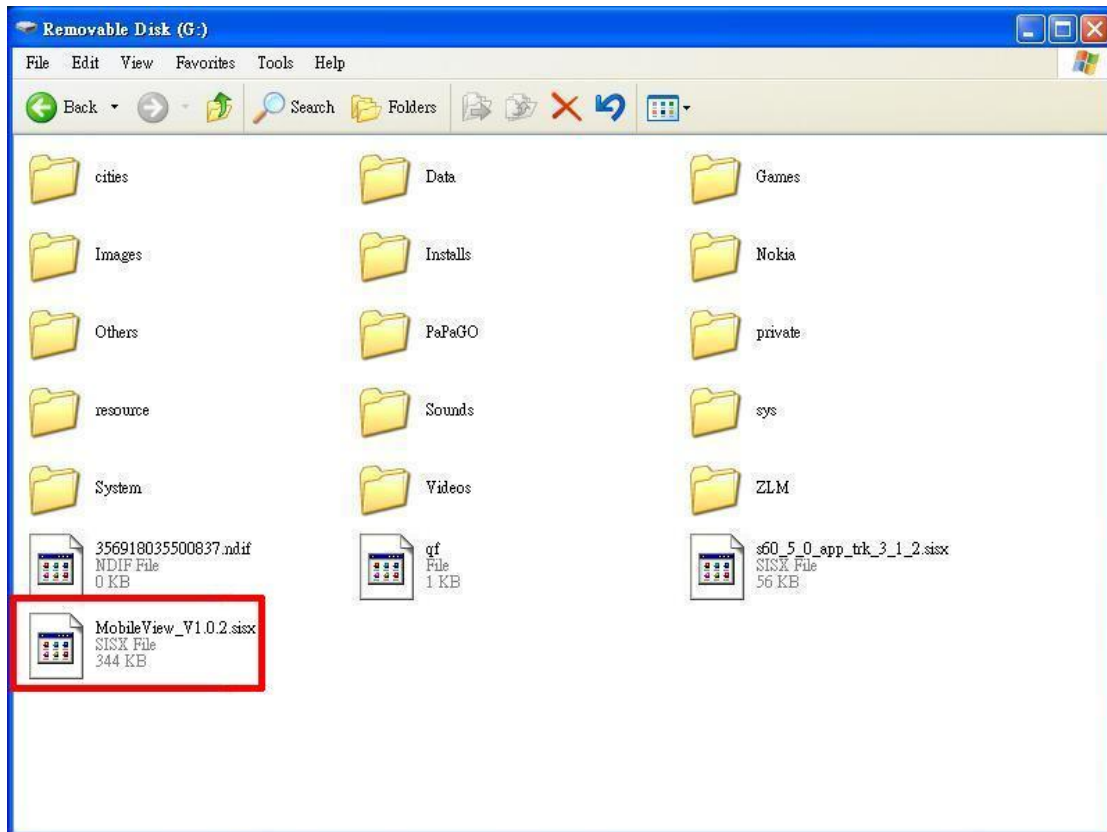
Please download the [MobileView_V1.0.2.sisx](#) file into your computer and then connect it with your mobile.

Step 2

Choose [PC Suite] or [Mass Storage] transferring mode for your mobile.

Step 3

Attach the [MobileView_V1.0.2.sisx](#) file to your mobile device.



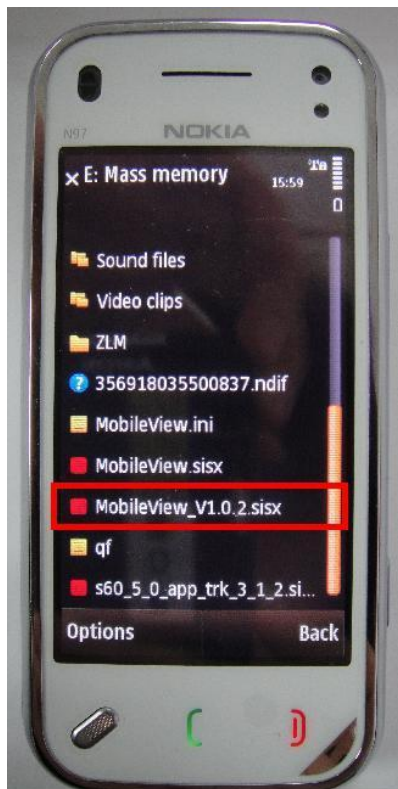
Step 4

Turn on your mobile and enter to [Apps.]→[Office]→[File mgr.]



Step 5

Choose the memory where you just saved the installation file. And you will find the file [[MobileView_V1.0.2.sisx](#)]



Step 6

Click the file to start install.



Step 7



After the installation has finished, you will find the icon **MobileView** in the [Apps.] file.



Chapter 2 3G Mobile View Operation

2.1 Connect to DVR

Step 1



Click **MobileView** to enter 3G mobile viewing mode.

Step 2

Enter the DVR information and then click [Options]→[Connect] to start connecting to your DVR.

For Exemple:



1. Server: Set IP address of your DVR.
2. Port: Set the Network port of your DVR.
3. ID & Password: Input LAN ID and password of your DVR.

NOTE: The ID & password are the LAN ID and password you selected; please refer to the instruction manual of your DVR.

4. Keep me signed in: You can enable this function to save the ID and password setting in your mobile.

2.2 3G Mobile Viewing Overview



1. Bitstream/ FPS

You can see the speed of network and frame per seconds.

2. Channel Select

Select the channel you want to monitor.



3. Display Screen

MobileView program only provides single channel live viewing. Click the display screen to switch to full screen, and click the screen again to go back.



4. Options

a. **Setup:** You can reset IP, port, ID and password for your DVR. (Please refer to the section 2.1 Step 2)

b. **Version:** You can see the version of MobileView program.



5. Exit Button

Click to exit mobile viewing mode.