

3G Mobile View Instruction Manual (For BlackBerry)

NOTE: You have to upgrade your BlackBerry to **OS Ver. 5.0** and above for Mobile Operating System, e.g. BlackBerry Handheld Software v5.0.0.771 (All Languages)

NOTE: Before upgrading your mobile phone, please delete the **Vendor.xml** file. (C:\Program Files\Common Files\Research In Motion\AppLoader)

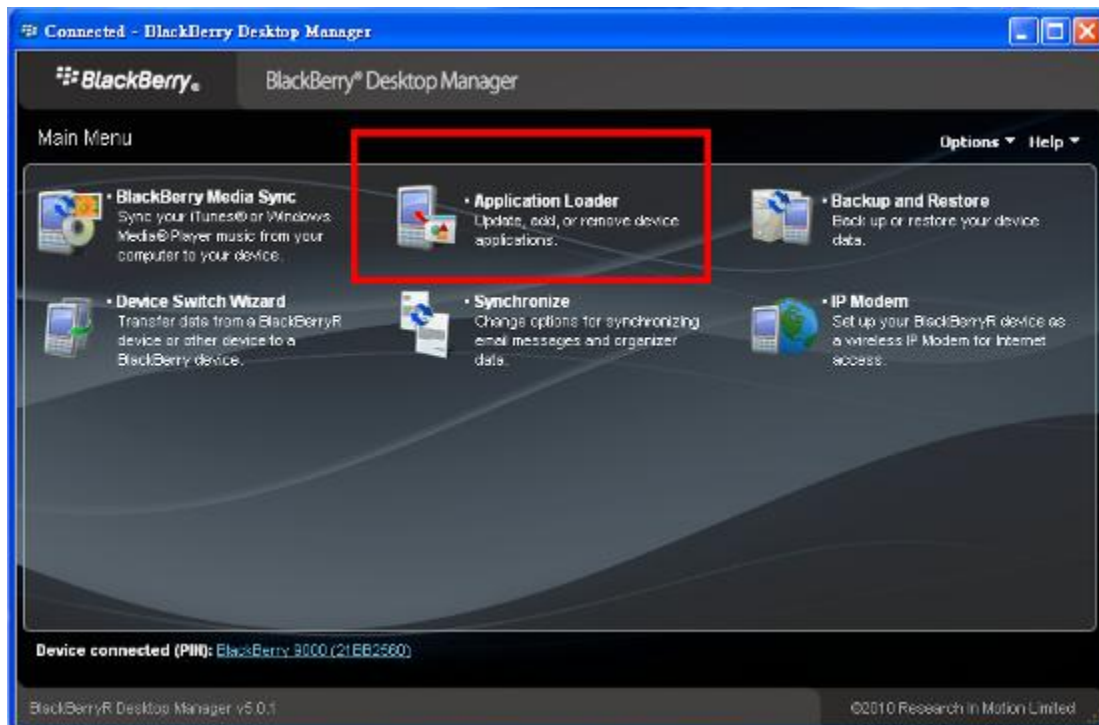
Chapter 1 Mobile Phone Setup

STEP 1

Connect your mobile device with your PC, and then open up the “**BlackBerry Desktop Manager v5.0.1**” software to proceed the installation.

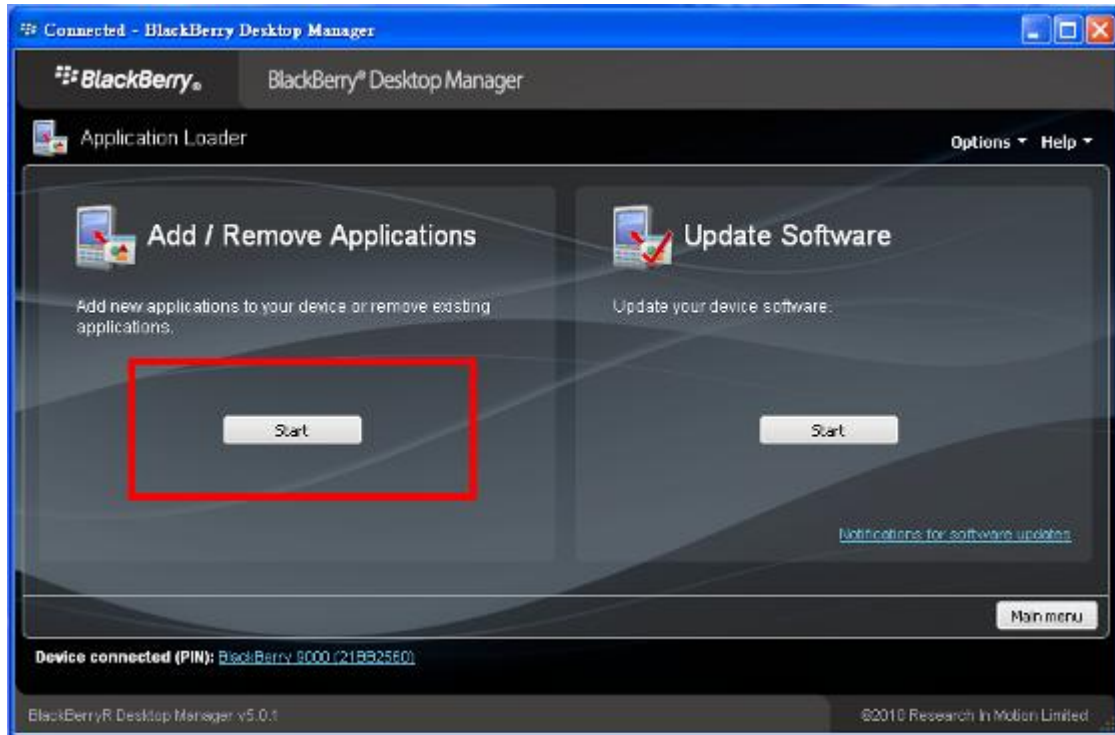
STEP 2

Click [Application Loader].



STEP 3

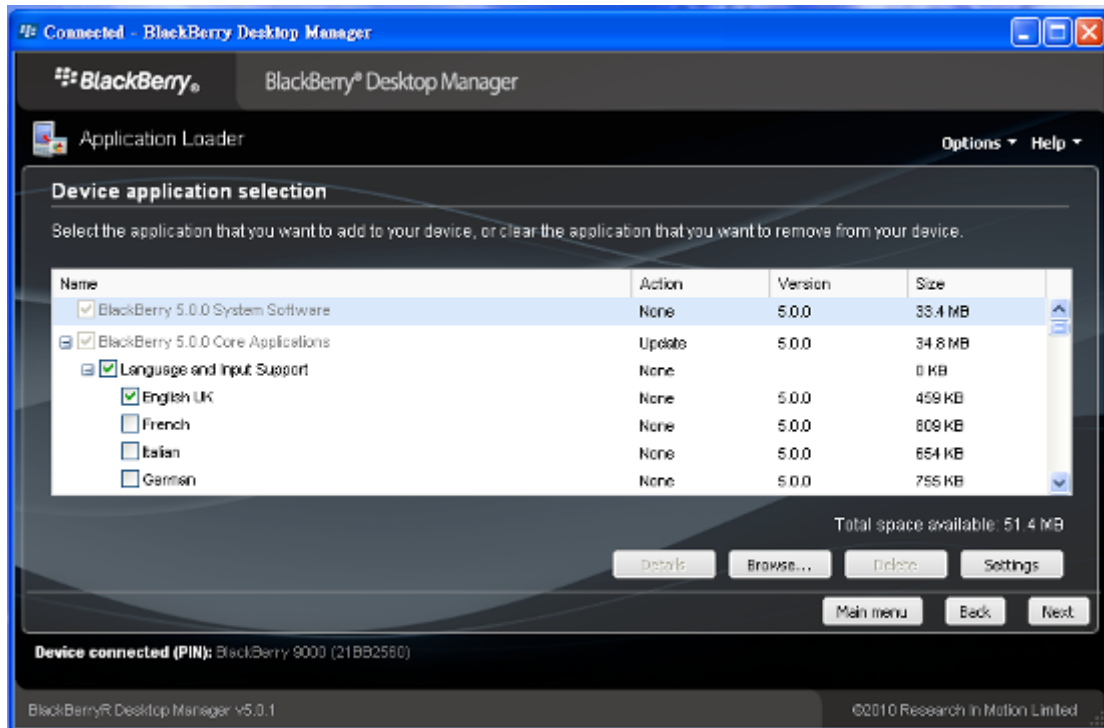
Click the [Start] button under “Add / Remove Applications”.



STEP 4

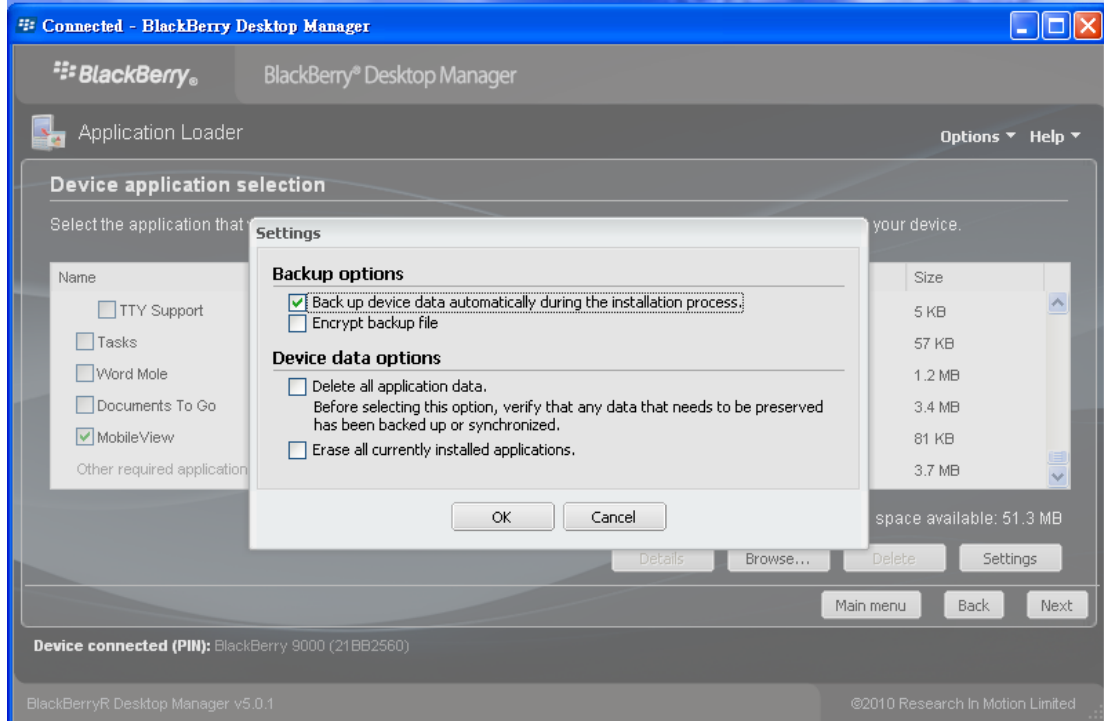
Click [Browse] and search for “**MobileView.alx**”

NOTE: “**MobileView.alx**” and “**MobileView.cod**” should be placed in the same folder.



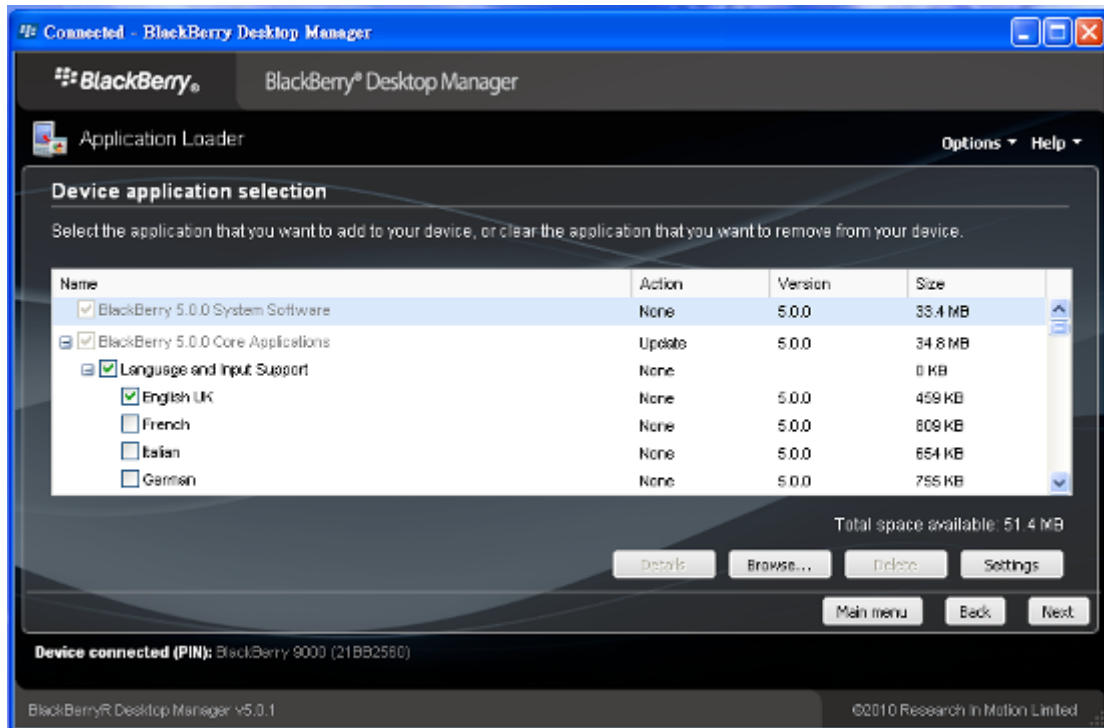
STEP 5

Click [Settings] and enable [back up device data automatically during the installation process].



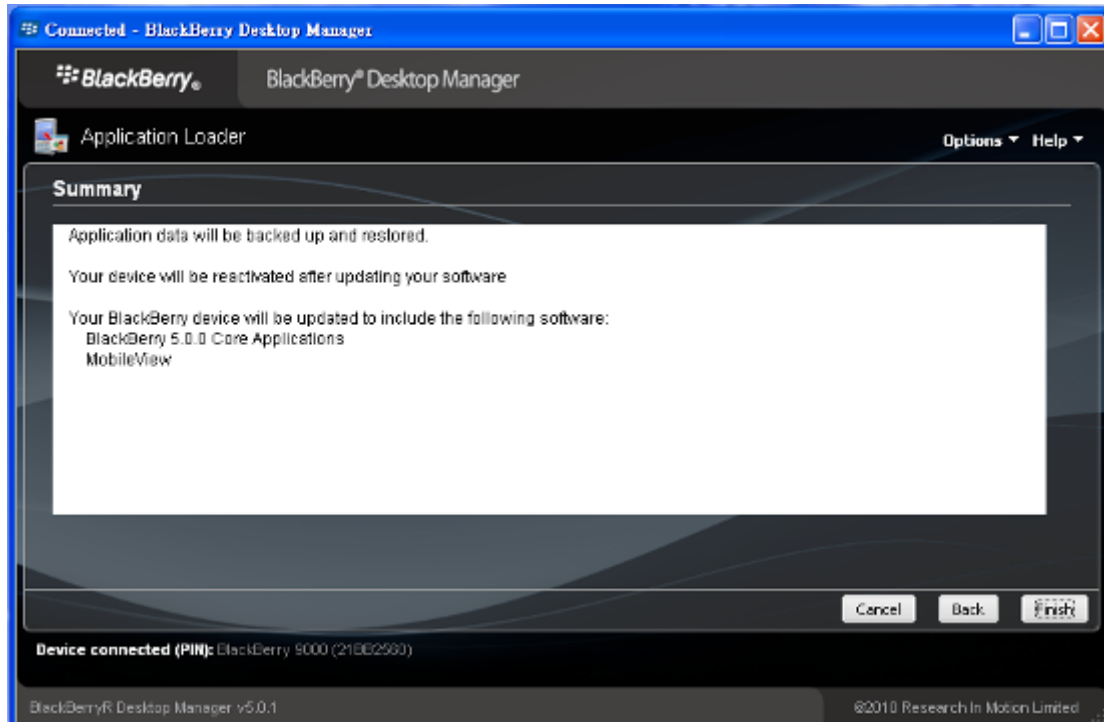
STEP 6

Click [Next]



STEP 7

After checking the "MobileView" is in the installation summary, please click "Finish" to complete the installation.



STEP 8

After the installation is finished, there will be the "MobileView" file in the

“Downloads” folder of your mobile device.



Chapter 2 3G Mobile View Operation

2.1 Connect to DVR

Step 1



Click [MobileView] to enter remote viewing mode.

Step 2

Enter the DVR information and click [Connect] to start connecting DVR.

For Example:



1. SERVER: Set IP address of the DVR you want to monitor.
2. PORT: Set the Network port of the DVR you want to monitor.
3. ID & PASSWORD: Input LAN ID and password of the DVR you use.
4. KEEP ME SIGNED IN: You can enable this function to save the ID and password setting in your mobile.

NOTE: The ID & password are the LAN ID and password you selected; please refer to the instruction manual of your DVR.

2.2 3G Mobile Viewing Overview



1. Display Screen

You can view the single channel live viewing.

2. Menu

CONNECT: You can reset IP, port, ID and password for your DVR. (Please refer to the section 2.1 Step 2)

ABOUT: You can see the version of MobileView program.



3. Exit Button

Click to exit mobile viewing mode.

4. Channel Select

To select the channel you want to monitor, you can press the red numeral keys on the phone.

For example: Changing to 1CH→0→1

2CH→2

:

:

10CH→1→0