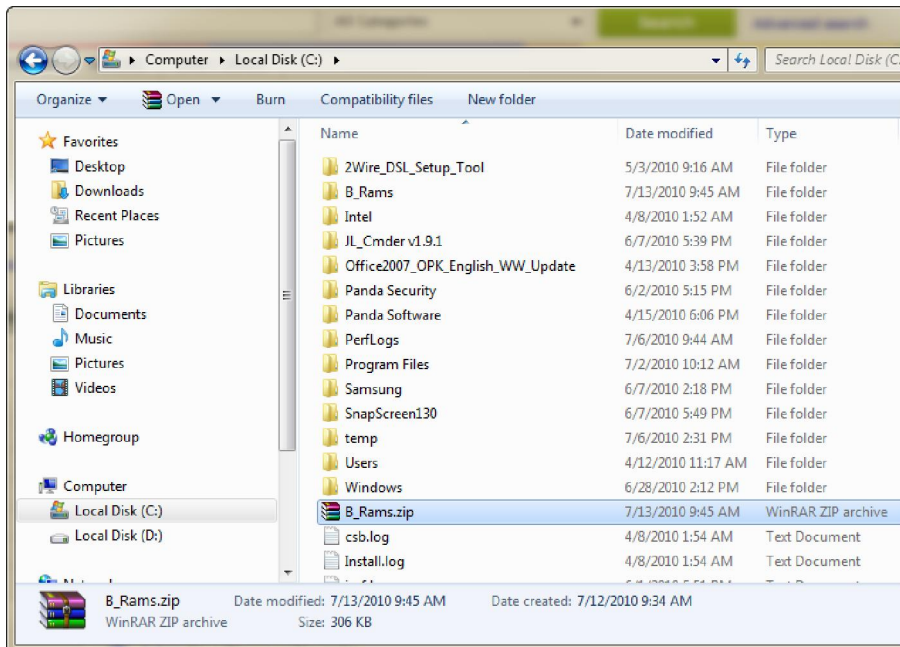


Installation Guide on how to connect your UNIMO DVR to your Blackberry™ Phone.

1. You will need to have Blackberry™ Desktop Manager installed on your computer. If you do not have the installation disk for the Blackberry™ Desktop Manager, then you can download it from <http://na.blackberry.com/eng/services>.
2. Next you will need to download the B_Rams application for your Blackberry™ phone. Please download the file from <FTP.UDRDNS.NET> > [blackberry](#) . Point to the Support tab and scroll down and click Downloads. On the Downloads page scroll down under Model# until you find Blackberry Viewer. Click on the folder in the Quick Guide/Other column. Download and save the B_Rams zip file on your root directory which is located on your C drive (please view below for clarification).



Once you have saved the B_Rams zip on your root directory, right click on the B_Rams file and select **Extract to B_Rams**. If you have done this procedure correctly, then you will see a B_Rams folder on your C drive directory. Double click on the B_Rams folder to open.

- Connect your Blackberry™ phone with your computer via the USB connector cable that came with your Blackberry™ phone. You **DO NOT** need to open the Blackberry™ Desktop

Name	Date modified	Type	Size
B_Rams.alx	6/30/2010 3:55 PM	ALX File	1 KB
B_Rams.cod	7/13/2010 1:50 PM	COD File	297 KB
install.bat	6/30/2010 3:58 PM	Windows Batch File	1 KB
JavaLoader.exe	9/16/2006 12:40 PM	Application	96 KB
license.txt	5/16/2010 5:44 PM	Text Document	1 KB
screenshot.bat	7/8/2010 12:35 PM	Windows Batch File	1 KB
uninstall.bat	7/8/2010 12:41 PM	Windows Batch File	1 KB

Manager program. Once you have made the connection, double click on the **install.bat** program. This program will automatically install the B_Rams application onto your Blackberry™. This process only takes a few seconds and a separate command prompt window will open. If you have performed the procedure correctly, you will see the information below on your command prompt.

```

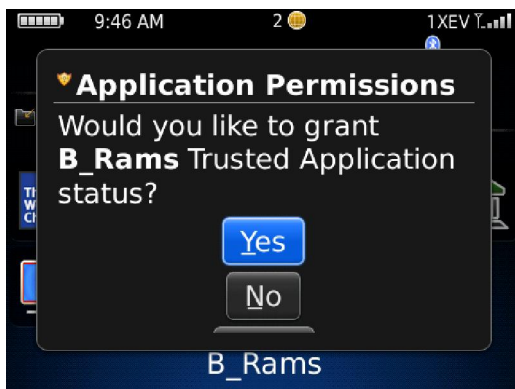
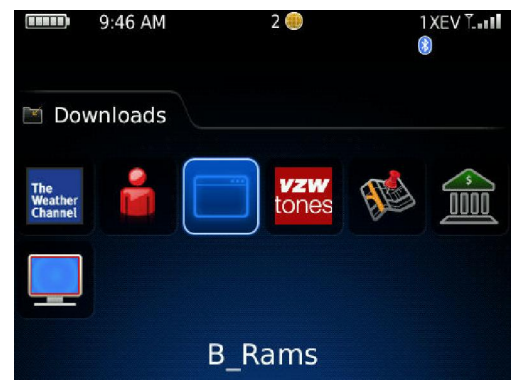
C:\Windows\system32\cmd.exe

C:\B_Rams>"C:\B_Rams\javaloader.exe" -usb load B_Rams.cod
RIM Wireless Handheld Java Loader
Copyright 2001-2006 Research In Motion Limited
Connected
Loading B_Rams                               Done
303526 bytes sent at ~1214104 bps
Disconnected

C:\B_Rams>pause
Press any key to continue . . .

```

- Go to your Downloads folder on your Blackberry™. You will now see a new application B_Rams. Open the B_Rams application.
- You will have to grant B_Rams permission to be able to run the B_Rams application on your Blackberry™.



6. After opening the B_Rams application, scroll down and select the 1st **Empty** slot and then scroll down to the **ADD** button and select.

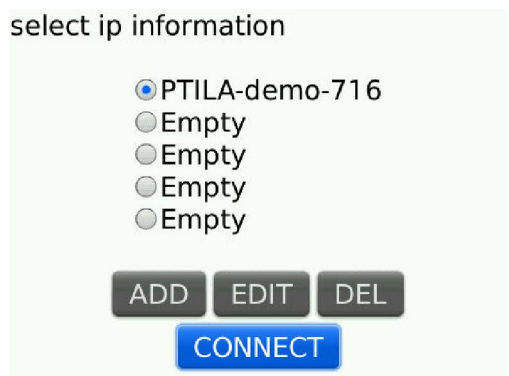
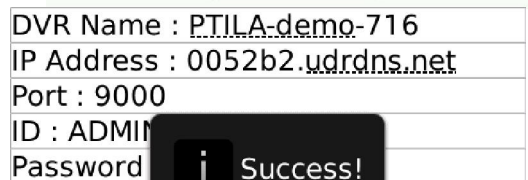
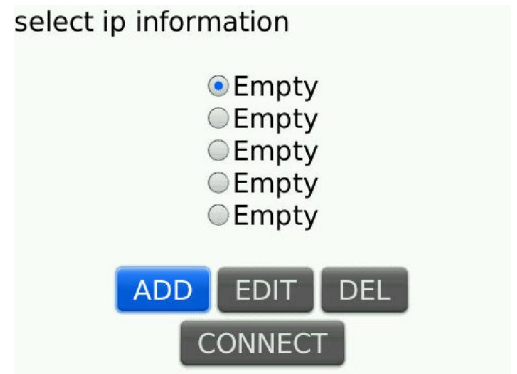
7. Enter all the correct parameters to network to your Unimo DVR. ****NOTE** DVR Name** is any name you want to remember this particular connection; i.e., MyStore or SD-Cleaners.

ID will be in most cases ADMIN (all caps).

Password will be numeric entries so please use the *alt* key when entering numbers here.

After you have entered the networking parameters, go to the **SAVE** button and select. When the B_Rams accepts the new connection you will see a **Success!** pop-up.

6. Next press the **CLOSE** button to revert to the Main Screen on the B_Rams application. Now select the NEW connection and then go to the **CONNECT** button and press select.



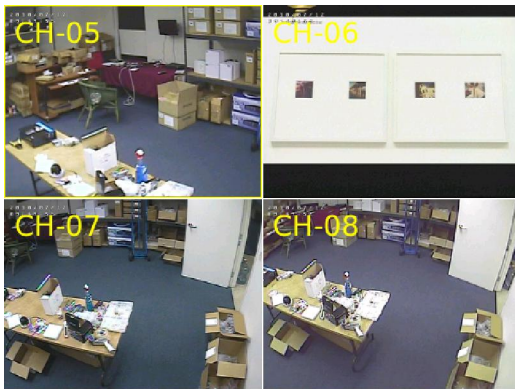
7. You will be able to see your cameras in Quad-Screen mode when the connection has been made properly between your Blackberry™ and your UNIMO DVR.



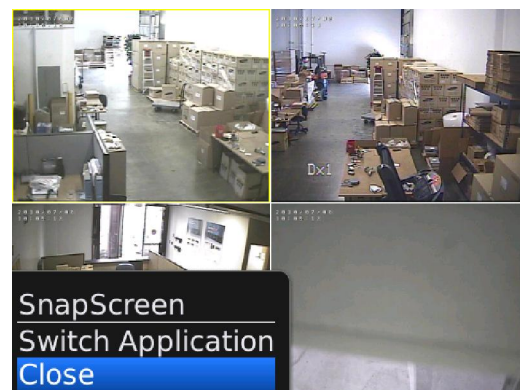
If your UNIMO DVR is an 8 or 16 channel unit, you can access more Quad-Screen views by pressing the "N" key on the Blackberry™ for *Next Screen* or the "B" key for *Back Screen*.

If you want to view a single channel from the Quad-Screen view, then scroll to the channel (highlighted by a yellow frame) and press the select button on the Blackberry™.

To exit single screen view, just press the select button on the Blackberry™ to revert back to Quad-Screen view.



8. On any view you can toggle to any particular single camera view by pressing the corresponding two digit keys on the BlackBerry™. For example, if you want to go to channel 6, then you would press the "0" (zero) and "F" (six) key on the BlackBerry™. ****NOTE**** You do not have press the Alt key for the number.
9. To exit the B_Rams application, you can either press the BlackBerry™ *Menu*key and select **Close** or the *Escape*key.



10. To uninstall the B_Rams application from your BlackBerry™, you can either go to the B_Rams application under Downloads and press the *Menu*key, and then scroll down to **Delete**. If your BlackBerry™ does not have this delete option, then go to the B_Rams folder on your computer's C directory. In the B_Rams folder, there is a uninstall.bat file. Connect your BlackBerry™ phone with your computer via the USB connector cable and then open the uninstall.bat file to delete the B_Rams program.